

GENERAL LEGEND:

- INDICATES AREA UNSUITED FOR HURRI-BOLT RODS- REFER TO STRUCTURALS FOR STRAPPING CALLOUT
- INDICATES BEAM
- WINDOW/DOOR OPENING, NO HURRI-BOLT RODS IN THIS AREA
- SHADING INDICATES EXTENT OF SHEAR WALL
- MASONRY, NO HURRI-BOLT RODS IN THIS AREA

SHEARWALL ROD LEGEND:

- SW1 ROD ASSEMBLY (5/8"φ - 1/2"φ) - 3-STORY [24]
- SW2 ROD ASSEMBLY (1/2"φ - 3/8"φ) - 3-STORY [16]
- SW3 ROD ASSEMBLY (1/2"φ - 3/8"φ) - 3-STORY [24]
- SW4 ROD ASSEMBLY (3/4"φ - 3/8"φ) - 3-STORY [16]

ROD LEGEND:

- 3/8"φ HURRI-BOLT TOP PLATE EXTERIOR ASSEMBLY - 3-STORY [58]
- 3/8"φ HURRI-BOLT TOP PLATE INTERIOR ASSEMBLY - 3-STORY [52]
- 1/2"φ HURRI-BOLT TOP PLATE ASSEMBLY - 3-STORY [28]

TRUSS STRAP LEGEND

TRUSS TO TOP PLATE TIE DOWN PER STRUCTURAL SHEET S3.12. AS AN ALTERNATE, USE USP TRUSS STRAPS AS LISTED BELOW.

TYPE	USP STRAP	UPLIFT CAPACITY
A	RT7A	670
B	RT8A	775
C	MTW12	1195
D	RT16A	1380
E	HTW20	1530

NOTES:
EX. "885-A" IS 885 LBS UPLIFT INSTALL [1] RT16A

AT CORNER JACK USE HHCP2, TYP. UNO.

USE (2)RT7A UP TO 1340 LBS UPLIFT, UNO.

AT JACK TRUSSES USE RT7A, UNO.

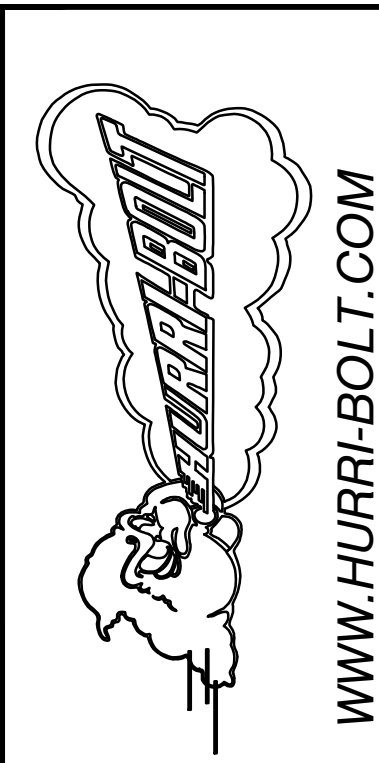
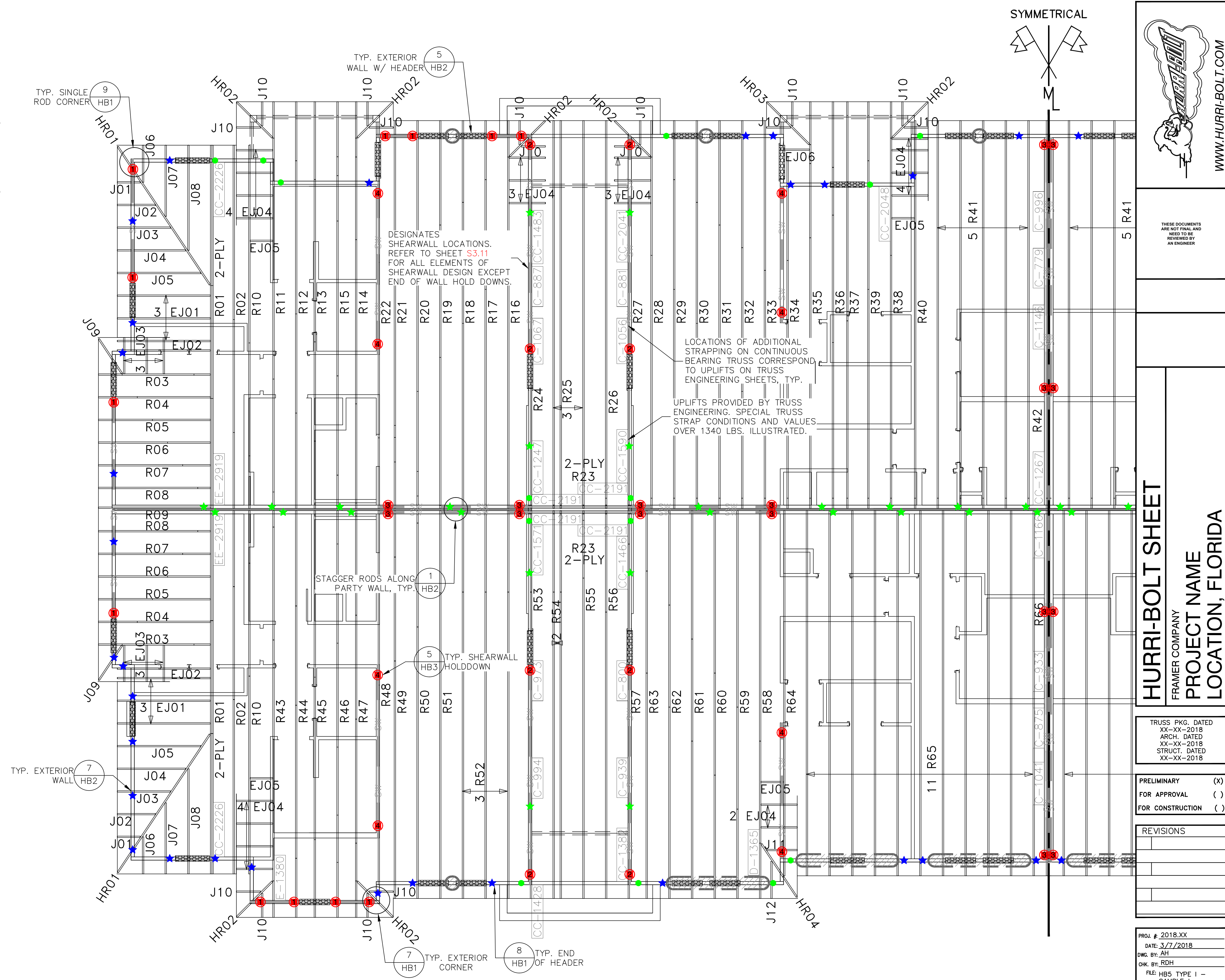
ALL 2-PLY TRUSSES USE MTW12, UNO.

USE MTW12 AT ROOF TRUSSES THAT ARE AT AN ANGLE WITH THE WALL

CONTRACTOR SHALL INSTALL STRAPPING AND ANCHORS AT ALL LOCATIONS WHERE HURRI-BOLT SYSTEM DOES NOT PROVIDE LATERAL AND UPLIFT RESISTANCE REQUIRED BY THE ORIGINAL STRUCTURAL DOCUMENTS. REFER TO STRUCTURAL DOCUMENTS FOR SPECIFICATION OF STRAPS AND ANCHORS AT SUCH LOCATIONS.

REFER TO STRUCTURAL DRAWINGS FOR ALL BEAM SIZES AND LOCATIONS

ROOF BEARING WALLS REQUIRE USP RT7A EVERY OTHER STUD



THESE DOCUMENTS ARE NOT FINAL AND NEED TO BE REVIEWED BY AN ENGINEER

HURRI-BOLT SHEET
FRAMER COMPANY
PROJECT NAME
LOCATION, FLORIDA

TRUSS PKG. DATED XX-XX-2018
ARCH. DATED XX-XX-2018
STRUCT. DATED XX-XX-2018

PRELIMINARY (X)
FOR APPROVAL ()
FOR CONSTRUCTION ()

REVISIONS

NO.	DESCRIPTION

PROJ. # 2018.XX
DATE: 3/7/2018
DWG. BY: AH
CHK. BY: RDH
FILE: HB5 TYPE 1 - SAMPLE.dwg

APARTMENT BLDG. TYPE I (BUILDING#: 4,5,8)
SCALE: 1/4" = 1' (QTY: 3)

SHEET #
HB5

Y:\Current Projects\000 Templates\VB Sheets\CAD\VB5 TYPE 1 - SAMPLE.dwg